

Copyright © 2023 Li Energy Private Limited. All rights reserved.

**Disclaimer**  
This document may contain predictive information, including but not limited to information about future finance, operations, product series, new technologies, etc. Many uncertain factors in practice may cause actual results to differ significantly from the predictive information in this document. Therefore, such predictive information is provided for reference only and constitutes neither an offer nor a commitment.

Version No: V6.2-230303



Li Energy Private Limited  
info@lienergy.com  
+91 94440 41971



# LI ENERGY INTRODUCTION

LI ENERGY PRIVATE LIMITED



## Company Profile

Li Energy was established in 2019 with the vision of offering top-notch energy solutions for a cleaner and advanced future. We prioritize quality and safety in our products and have gained worldwide recognition for their exceptional product lineup.

Our ambitious goal is to create an advanced automated Lithium Cell and Battery System, achieving independence from Imports and contribution to the sustainable shift towards Electric Mobility and Energy Storage Solution..

Li Energy is setting up a state of the art 2 Gigawatt Prismatic Module & Pack Manufacturing Pilot by May 2024 with High Automation & Laser Welding Technology. Li Energy will scale up to 20+ Gigawatt by 2026 for large Scale Energy Storage Application & Electric Vehicles with an aim to produce battery systems in high quality & high volume to bring down the cost for the Indian & International Markets.

Li Energy has signed Strategic Technology Partnerships with Global Leaders and High Quality Cell Supply.

## Corporate Culture

### Vision

Industry Leadership,  
Strong Enterprise,  
Customer Satisfaction

### Core Values

Constant Effort, Diligence,  
Professionalism,  
Pioneering Innovation

### Core Thought

Only Change is Constant

### Work Standard

A Millimeter Miss is as Good as a  
Thousand Miles

CORE ENERGY • LEADING THE FUTURE • INFINITE POSSIBILITIES



## Energy Storage Solutions

Li Energy is committed to providing customers with professional energy storage battery solutions from safety, energy efficiency, economic efficiency, installation and maintenance convenience and other multi-dimensional factors, so as to facilitate the integration of “power sources, grid, load and storage”.



### Safety

- Compliant with GB, UL, CB global access certification
- Thinner cell solution ,which can fundamentally solve the heat problem at its source



### Long Cycle Life

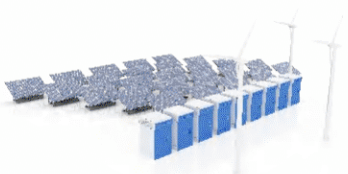
- Cycle life 10,000 +



### Easy Installation

- Platform and modular design
- Plug-and-play for easier maintenance

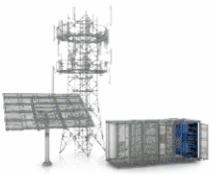
## Market Applications



Commercial and Industrial ESS



Home ESS



Telecom ESS



Grid ESS



E-Vessel



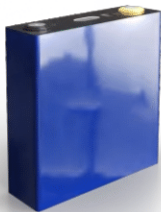
Outdoor ESS



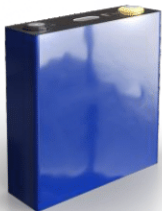
ESS Battery Cell



Basic parameters	
Product specifications	RF39-20A
Material type	LFP
Rated capacity (Ah)	20.5Ah
Rated voltage (V)	3.2V
Charge/discharge rate (C)	0.5/1
Cycle life (25°C, @70% SOH)	2000
Dimensions (D*H mm)	Φ39*139mm
Weight (kg)	0.37kg
Application fields	Two-wheeled vehicles/Three-wheeled vehicles Travel sightseeing car/A00-class passenger vehicles
Testing and certification	GB38031/GBT31484/GBT31486/UN38.3



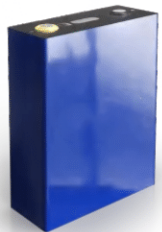
Basic parameters	
Product specifications	PF160-100A
Material type	LFP
Rated capacity (Ah)	100Ah
Rated voltage (V)	3.2V
Charge/discharge rate (C)	1
Cycle life (25°C, @70% SOH)	6000
Dimensions (W*L*H mm)	50*160.3*118.5mm
Weight (kg)	2kg
Application fields	Telecom ESS/Home ESS
Testing and certification	GB/UN38.3/UL/IEC



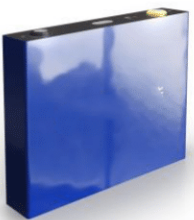
Basic parameters	
Product specifications	PF160-150A
Material type	LFP
Rated capacity (Ah)	150Ah
Rated voltage (V)	3.2V
Charge/discharge rate (C)	1
Cycle life (25°C, @70% SOH)	6000
Dimensions (W*L*H mm)	50*160.3*167.5mm
Weight (kg)	2.85kg
Application fields	Telecom ESS/Home ESS
Testing and certification	GB/UN38.3/UL/IEC



Basic parameters	
Product specifications	PF173-150A
Material type	LFP
Rated capacity (Ah)	150Ah
Rated voltage (V)	3.2V
Charge/discharge rate (P)	1
Cycle life (25°C, @70% SOH)	6000
Dimensions (W*L*H mm)	44.7*174.2*189.6mm
Weight (kg)	3.05kg
Application fields	Commercial and Industrial ESS/Telecom ESS/ Home ESS
Testing and certification	GB/UN38.3/UL/IEC



Basic parameters	
Product specifications	PF173-306A
Material type	LFP
Rated capacity (Ah)	306Ah
Rated voltage (V)	3.2V
Charge/discharge rate (P)	0.5
Energy efficiency	95%
Cycle life (25°C, @80% SOH)	8000
Dimensions (W*L*H mm)	71.5*174.4*207.2mm
Weight (kg)	5.67kg
Application fields	Grid ESS/Commercial and Industrial ESS/ E-Vessel
Testing and certification	GB/CCS/UN38.3/UL/IEC



Basic parameters	
Product specifications	PF262-360A
Material type	LFP
Rated capacity (Ah)	360Ah
Rated voltage (V)	3.2V
Charge/discharge rate (P)	0.5
Energy efficiency	95%
Cycle life (25°C, @80% SOH)	10000
Dimensions (W*L*H mm)	57.5*262.4*207.2mm
Weight (kg)	6.5kg
Application fields	Grid ESS/Commercial and Industrial ESS/ E-Vessel
Testing and certification	GB/CCS/UN38.3/UL/IEC



Basic parameters	
Product specifications	PF173-280A
Material type	LFP
Rated capacity (Ah)	280Ah
Rated voltage (V)	3.2V
Charge/discharge rate (P)	0.5
Energy efficiency	95%
Cycle life (25°C, @80% SOH)	8000
Dimensions (W*L*H mm)	71.5*174.4*207.2mm
Weight (kg)	5.3kg
Application fields	Grid ESS/Commercial and Industrial ESS/ E-Vessel
Testing and certification	GB/UN38.3/UL/IEC/CCS



Module & Pack



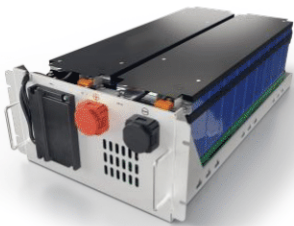
Basic parameters	
Product name	Portable power
Product specifications	PST1000
Rated energy	1049Wh
Rated power	1000W
Battery	20.5Ah-2P8S battery pack
Service life	≥1500 circulations
Input	1000W/200W
Output	Continuous AC output at 220V, 1,000W
	USB-C:5V3A,9V3A,12V3A,15V3A,20V3A
	Car charger output:DC12V/10A
	USB-A:5V 2.4A*2
Application fields	Outdoor ESS



Basic parameters	
Product name	Telecom ESS
Product specifications	PPL01-48100
Configuration	1P16S
Rated capacity (Ah)	100Ah
Rated voltage (V)	51.2V
Rated energy (kWh)	5.12kWh
Charge/discharge rate (C)	1
Energy efficiency	≥93%
Cooling	Air cooling
Dimensions (W*L*H mm)	440*485*132mm
Weight (kg)	42kg
Application fields	Telecom ESS



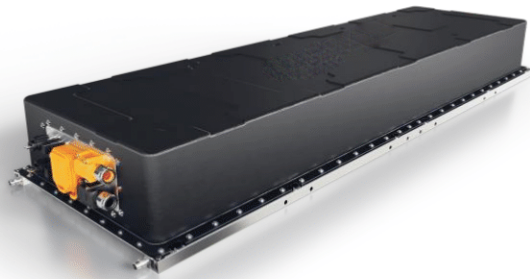
Basic parameters	
Product name	Home ESS
Product specifications	HES01-H05
Configuration	1P16S
Rated capacity (Ah)	100Ah
Rated voltage (V)	51.2V
Rated energy (kWh)	5.12kWh
Charge/discharge rate (C)	1
Energy efficiency	≥93%
Cooling	Air cooling
Dimensions (W*L*H mm)	700*200*360mm
Weight (kg)	42kg
Application fields	Home ESS



Basic parameters	
Product name	Air cooling battery module
Product specifications	PF173-280A-P16
Configuration	1P18S
Rated capacity (Ah)	280Ah
Rated voltage (V)	57.6V
Rated energy (kWh)	16.128kWh
Energy efficiency	≥94%
Charge/discharge rate (P)	0.5
Cooling	Air cooling
Dimensions (W*L*H mm)	450*846*230mm
Weight (kg)	113kg
Application fields	Grid ESS/Commercial and Industrial ESS



Basic parameters	
Product name	Liquid cooling battery module
Product specifications	PF173-280A-P46L
Configuration	1P52S
Rated capacity (Ah)	280Ah
Rated voltage (V)	166.4V
Rated energy (kWh)	46.592kWh
Energy efficiency	≥94%
Charge/discharge rate (P)	0.5
Cooling	Liquid cooling
Dimensions (W*L*H mm)	810*1100*240mm
Weight (kg)	330kg
Application fields	Grid ESS/Commercial and Industrial ESS



Basic parameters	
Product name	Liquid cooling battery module
Product specifications	PF262-360A-P69L
Configuration	1P60S
Rated capacity (Ah)	360Ah
Rated voltage (V)	192V
Rated energy (kWh)	69.12kWh
Charge/discharge rate (P)	0.5
Energy efficiency	≥94%
Cooling	Liquid cooling
Dimensions (W*L*H mm)	630*2100*240mm
Weight (kg)	475Kg
Application fields	Grid ESS



Rack & System



Basic parameters	
Product name	Air Cooling battery rack
Product specifications	PF173-280A-R354F
Configuration	1P414S
Cell capacity (Ah)	280Ah
Rated voltage (V)	1324.8V
Nominal energy (kWh)	370.944kWh
Charge/discharge rate (P)	0.5
Energy efficiency	≥93%
Cooling	Air Cooling
Dimensions (W*L*H mm)	1395*910*2250mm
Weight (kg)	2800kg
Application fields	Grid ESS



Basic parameters	
Product name	Liquid cooling outdoor cabinets
Product specifications	OTS01-H215L
Cell capacity (Ah)	280Ah
Configuration	1P240S
Nominal energy (kWh)	215kWh
Rated power (kW)	100KW
Range of DC-side voltage (V)	600V~876V
Output voltage (V)	380V@AC
Energy efficiency	≥90%@AC
Thermal management	Liquid cooling
Firefighting system	Perfluorohexanone/Aerosol
System communication	Modbus-RTU/TCP
IP protection	IP55
Dimensions (L*W*H)	1280*1000*2340mm
Weight (kg)	2200kg
Application fields	Grid ESS/Commercial and Industrial ESS



Basic parameters	
Product name	Liquid cooling battery energy storage container
Product specifications	PF173-280A-C3354L
Cell capacity (Ah)	280Ah
Configuration	9*1P416S
Nominal energy (kWh)	3354kWh
Rated power (kW)	1700KW
Rated voltage (V)	1331.2V
Range of working voltage (V)	1040-1500V
Range working temperature	-20~50°C
Thermal management	Liquid cooling
IP protection	IP55
Dimensions (L*W*H mm)	6050*2440*2896mm (20ft)
Weight (T)	34T
Application fields	Grid ESS



Basic parameters	
Product name	Air Cooling battery energy storage container
Product specifications	PF173-280A-C5677F
Cell capacity (Ah)	280Ah
Configuration	16*1P396S
Nominal energy (kWh)	5677kWh
Rated power (kW)	2500KW
Rated voltage (V)	1267.2V
Range of working voltage (V)	990~1445.4V
Range working temperature	-20~50°C
Thermal management	Intelligent air cooling
IP protection	IP54
Dimensions (L*W*H mm)	13716*2438*2896 (45ft)
Weight (T)	52T
Application fields	Grid ESS



## Passenger Vehicles Electrification Solutions

Li Energy focuses on providing safe, reliable and cost-effective battery solutions for new energy passenger vehicles, with product series covering the entire range of models from MiniEV to C+ class, helping passenger vehicle companies to upgrade their electrification.



### High Security, High Convenience

- Cell material and structural safety optimization
- Anti-thermal runaway propagation system



### Long Service Life, Low Cost

- Warranty for 6 years or 600,000 km



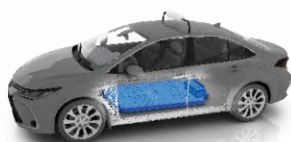
### Long Battery Life, High Availability

- PED 190Wh/kg High-energy dense lithium iron technologies
- Endurance covering 400-600+km

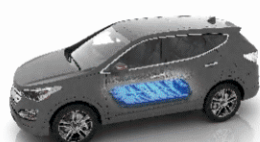
## Market Applications



EV(to C)



EV(to B)



PHEV/HEV





## Commercial Vehicles Electrification Solutions

Li Energy provides customers in commercial applications with a full range of high-quality battery solutions, which can be widely used in logistics vehicles, heavy trucks, buses, sanitation vehicles, construction machinery, vessels and other fields, enabling the full electrification solutions for commercial applications.



### High Security, High Convenience

- Certified by ISO14000 environmental system products are compliant with GB, IEC, UN38.3. MSDS and UL.
- High-performance liquid cooling system with a temperature difference of 3°C, bringing high heat tolerance



### Long Service Life, Low Cost

- Cycle life 4,000+



### All-Weather Service, High Availability

- Used in all weather, all working conditions, and ultra-wide temperature

## Market Applications



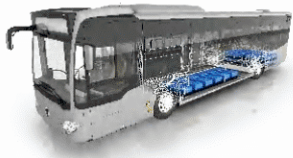
Logistics vehicles



Trucks



Forklifts



Buses



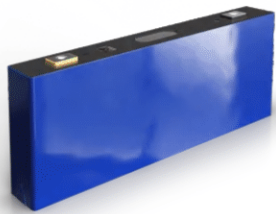
Ships



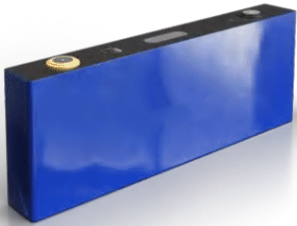
EV Battery Cell



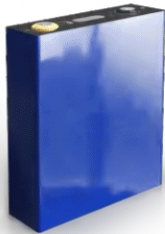
Basic parameters	
Product specifications	RF39-20A
Material type	LFP
Rated capacity (Ah)	20.5Ah
Rated voltage (V)	3.2V
Charge/discharge rate (C)	0.5/1
Cycle life (25°C, @70% SOH)	2000
Dimensions (D*H mm)	Φ39*139mm
Weight (kg)	0.37kg
Application fields	Two-wheeled vehicles/Three-wheeled vehicles Travel sightseeing car/A00-class passenger vehicles
Testing and certification	GB38031/GBT31484/GBT31486/UN38.3



Basic parameters	
Product specifications	PF300-100A
Material type	LFP
Rated capacity (Ah)	100Ah
Rated voltage (V)	3.2V
Charge/discharge rate (C)	1/1
Cycle life (25°C, @80% SOH)	2500
Dimensions (W*L*H mm)	27*300*112mm
Weight (kg)	1.98kg
Application fields	Passenger vehicles
Testing and certification	GB38031/GBT31484/GBT31486/UN38.3

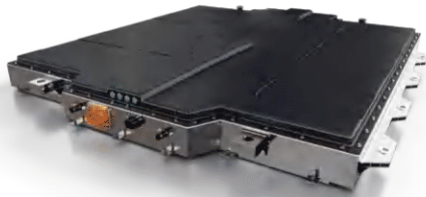


Basic parameters	
Product specifications	PF300-166A
Material type	LFP
Rated capacity (Ah)	166Ah
Rated voltage (V)	3.2V
Charge/discharge rate (C)	1/1
Cycle life (25°C, @80% SOH)	2500
Dimensions (W*L*H mm)	39*300*113mm
Weight (kg)	2.97kg
Application fields	Passenger vehicles
Testing and certification	GB38031/GBT31484/GBT31486/UN38.3

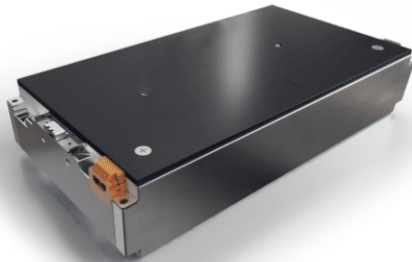


Basic parameters	
Product specifications	PF173-230A
Material type	LFP
Rated capacity (Ah)	230Ah
Rated voltage (V)	3.2V
Charge/discharge rate (C)	1/1
Cycle life (25°C, @80% SOH)	4000
Dimensions (W*L*H mm)	54*173*207mm
Weight (kg)	4.1kg
Application fields	Commercial vehicles/Buses/Heavy trucks
Testing and certification	GB38031/GBT31484/GBT31486/UN38.3

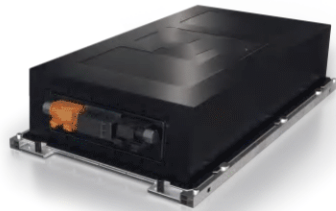
Module & Pack



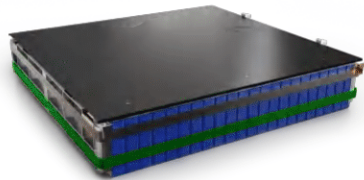
Basic parameters	
Product specifications	PF300-135A-P55L
Configuration	1P128S
Rated capacity (Ah)	135Ah
Rated voltage (V)	409.6V
Rated energy (kWh)	55.3kWh
Charge/discharge rate (C)	1/1
Cooling	Liquid cooling
Dimensions (W*L*H mm)	1366*1431*135mm
Weight (kg)	375kg
Application fields	Passenger vehicles



Basic parameters	
Product specifications	PF300-166A-M7
Configuration	1P14S
Rated capacity (Ah)	166Ah
Rated voltage (V)	44.8V
Rated energy (kWh)	7.4kWh
Charge/discharge rate (C)	1/1
Dimensions (W*L*H mm)	304*600*115mm
Weight (kg)	44.1kg
Application fields	Passenger vehicles



Basic parameters	
Product specifications	PF173-230A-P35L
Configuration	1P48S
Rated capacity (Ah)	230Ah
Rated voltage (V)	153.6V
Rated energy (kWh)	35.33kWh
Charge/discharge rate (C)	1/1
Cooling	Liquid cooling
Dimensions (W*L*H mm)	630*1060*240mm
Weight (kg)	218kg
Application fields	Commercial vehicles



Basic parameters	
Product specifications	PF300-135A-M13
Configuration	1P32S
Rated capacity (Ah)	135Ah
Rated voltage (V)	102.4V
Rated energy (kWh)	13.82kWh
Charge/discharge rate (C)	1/1
Dimensions (W*L*H mm)	582*605*119mm
Weight (kg)	80kg
Application fields	Passenger vehicles